

UNRIVALED  
QUALITY &  
COMFORT

 **TAKARA  
BELMONT**











**Hidetaka Yoshikawa**  
Chairman & CEO

Our mission is to help people fulfill their wish to remain beautiful and healthy by providing superior products and services.

It's the common pursuit of beauty and health that unites people of all countries, generations and eras. While we have provided products and services to the world for countless years, the role we all share continues to be a steadfast reminder of the love and responsibility that first sparked our passion.

We strive for innovation and improvement. The shifting-tides of digitalization and globalization drew waves of change: change in the way we live, change in corporate management, and change in society. With this change, we expect society to look towards our industry for answers to growing needs in the beauty and health fields.

With an eye towards the future, we continue to advance in all areas by maximizing the potential of technology, expanding our capabilities and creating value for our customers through new products and enhanced services. The tremendous value placed on our customers is unwavering and remains as both a priority and tribute to our success.

With a diverse culture of resources, we embark on a journey to improve ourselves – and the world – for years to come.

A handwritten signature in black ink, reading "Hidetaka Yoshikawa". The signature is stylized, with a long horizontal stroke at the end.



## CRAFTSMANSHIP

Simply stated, it's all about the time – the time invested with sourcing superior quality materials, the time we have devoted to our Takara Belmont 16-point quality inspection, and the time we have added for hand-crafted quality production. As advanced traditionalists, our products have been refined by generations of experience and an ever-lasting commitment to our customers and the health and beauty industries.

Our fine-tuned process provides our customers with the next-level products and services you've come to expect from Takara Belmont. It's our ahead-of-the-curve philosophy that drives all of the production advancements including laser-guided upholstery cutting that decreases material fraying while increasing product longevity, 960° thermo press technology to ensure long-lasting impressions and carefully calibrated pneumatic tools to pinpoint accuracy from the bolts up.





# SHOWROOMS & OFFICES

Today, salon and spa customers are looking for more than just the basics. As a beauty professional, you want to provide them with the amenities that they have come to expect. Our sales and design team at Takara Belmont can help you create an environment that will attract customers and make your business successful.

Whether your project is large or small, we provide you with the assistance you need to create what you've always wanted. You can be confident that you're dealing with the industry's leader in innovation, quality, and breadth of options. You will know that everything you install in your salon is manufactured to last a lifetime.

## US HEADQUARTERS

101 Belmont Drive  
Somerset, NJ 08873  
www.TakaraBelmont.com  
732.469.5000 | 800.526.3847

## NEW JERSEY & PENNSYLVANIA

101 Belmont Drive  
Somerset, NJ 08873  
njpa@takarabelmont.com  
877.283.1289 | 732.283.1687

## NEW YORK

17 West 56<sup>th</sup> Street  
New York, NY 10019  
newyork@takarabelmont.com  
215.541.6660 | 212.315.4598

## CENTRAL MIDWEST

1631 Dr. Martin Luther King Dr.  
St. Louis, MO 63106  
centralmidwest@takarabelmont.com  
800.325.7373 | 314.436.1039

## SOUTHEAST

4166 Sinclair Street  
Denver, NC 28037  
southeast@takarabelmont.com  
888.492.7292

## WEST COAST

1350 Reynolds Ave., Ste. 122  
Irvine, CA 92614  
westcoast@takarabelmont.com  
949.916.3404 | 949.916.3414

## SOUTHWEST

2015 Midway Road, Ste. 112  
Carrollton, TX 75006  
southwest@takarabelmont.com  
800.478.6368 | 972.242.1985

## NORTH MIDWEST

3010-D Woodcreek Drive  
Downers Grove, IL 60515  
norhtmidwest@takarabelmont.com  
732.469.5000 | 800.526.3847

## MID-ATLANTIC

4200 Forbes Blvd., Ste. 105  
Lanham, MD 20706  
midatlantic@takarabelmont.com  
301.577.0212

## NEW ENGLAND

Boston, MA  
newengland@takarabelmont.com  
800.283.3222 | 781.551.0423



## KITA SERIES

The Kita Series is versatile, allowing for customers to sit longer for a variety of services, meaning greater menu expansion for salon owners.



NAMI STYLING CHAIR  
ST-M60



NAGI STYLING CHAIR  
ST-M70





## AMERICANA SERIES

The Americana Series creates a cohesive aesthetic through a welcomed variety of seating styles. Featuring the Bellus, Novo and Virtus chairs Takara Belmont brings you classic modern appeal. Enjoy a step up from the competition with a sophisticated design and top-grade craftsmanship. Also available as a shampoo unit, dryer, all-purpose chair and reception chair.



VIRTUS CHAIR  
ST-U10 / BW-U16 + SH-640



NOVO CHAIR  
ST-U20 / BW-U26 + SH-640



BELLUS CHAIR  
ST-U30 / BW-U36 + SH-640



## PROCESSORS



ROLLER BALL-F  
RB-47A / RB-42S

The Roller Ball F brings speed, power, and convenience in both wall-mount and mobile styles.



MICRO MIST  
SD-200NIW

Using the power of water, the mist helps treatment particles permeate into damaged hair.



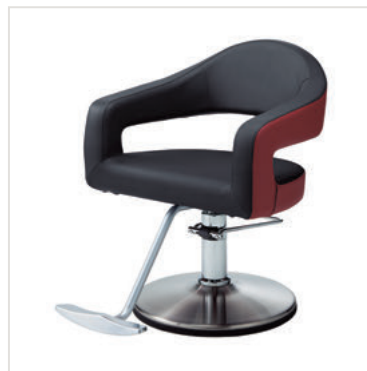


## G 90 SERIES

The G90 Series is developed with a philosophy of integrating science, technology and design. Positioning Takara Belmont as the leading salon and spa furniture provider through the years. The Cape, Cove and Knoll are the perfect expression of quality you can expect from Takara Belmont.



COVE CHAIR  
ST-N40



KNOLL CHAIR  
ST-N50

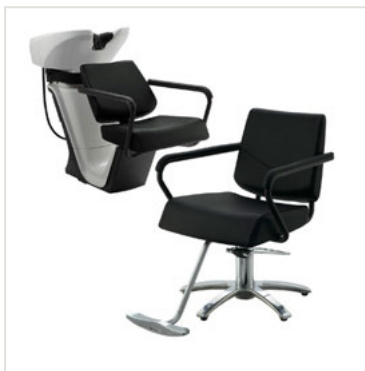


CAPE CHAIR  
ST-N60



## RS3 SERIES

Superb design features to make the best shiatsu shampoo experience a reality. Conveniently shaped bowl with a comfortable neck cushion aligns with thermo-mixed warm water, and a hush-quiet drain adding up to a uniquely relaxing shiatsu shampoo. The high-tech neck cushion provides comfort for customers of all sizes. Uniquely relaxing for you and your client.



PRIME CHAIR  
ST-N80 / SH-610



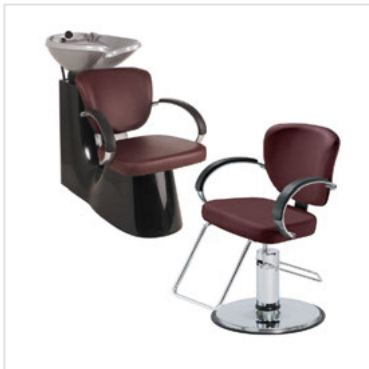
RS ELITE CHAIR  
SH-620



LUXIS CHAIR  
ST-N90 / SH-630



## LIBRA & ODIN



### LIBRA CHAIR

ST-710 / LIBERTY - SH-500

The Libra features a wide seat and backrest for maximum comfort. Also available as a shampoo unit.



### ODIN CHAIR

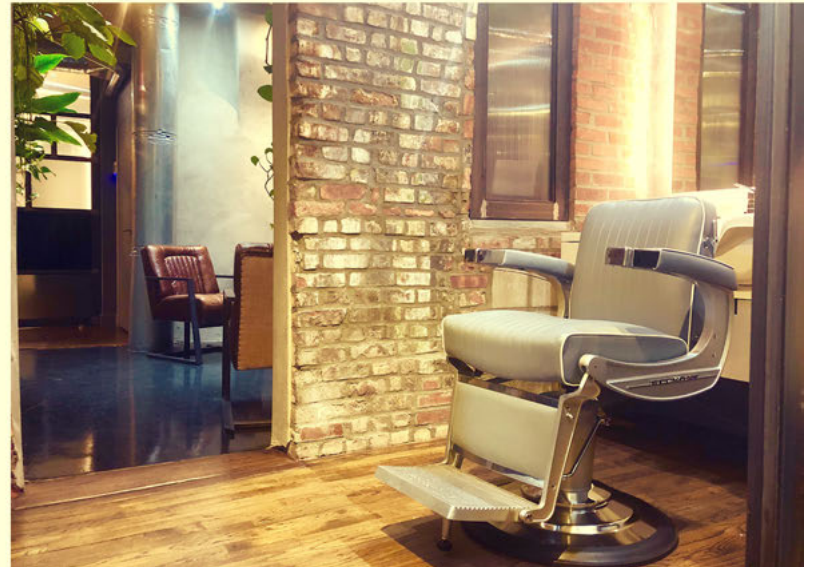
ST-E10 / BW-E16 + SH-640

One of our classic chairs with a sleek modern style. Also available as shampoo unit to match your salon.











## RICHE SERIES

The Riche is the first chair on the market specifically designed for eyelash services. Both guests and cosmeticians will relax into comfort with this cohesive collection, allowing beauticians to stay focused on their clients and their procedures. Backed by rigorous testing and exhaustive research, the Riche will keep eyelash services, beautiful, healthy, and safe.



RICHE CHAIR  
AY-EL141ES9



RICHE STOOL  
AY-ELS-ES9

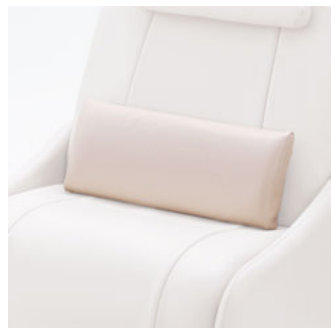


RICHE WAGON  
SR-WA141





## ACCESSORIES



RICHE LUMBAR  
EA-D83C-ES9



ASISTA TRAY II  
SR-AS21LD



D-GALLEY WAGON TYPE S  
SR-DGS



ARGENTO STOOL  
CS-050

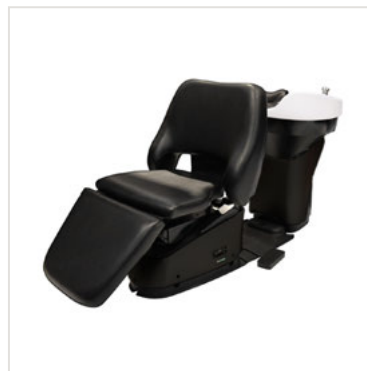


## YUME EXPERIENCE

Turn your shampoo service area into a multi-functional space with the YUME Shampoo Unit and create new income possibilities for your salon. With the adjustable height of the shampoo unit, your technician can stand and shampoo or remain seated to perform extended spa sessions and hair treatments.



YUME  
SH-YML



YUME ESPOIR  
SH-YMESMBT11



YUME IXI  
SH-YMIX / SH-YMIXL

## ACCESSORIES



YUME ESPOIR STOOL  
AY-Z009X

Take shampoo services to the next level with an operator-conscious seating solution – the Yume Espoir Stool.



SPA MIST II  
SD-160

Vibrant colors, lasting curls, stronger wave length, head spa treatments – the Spa Mist II can do it all.







## BACKWASH UNITS



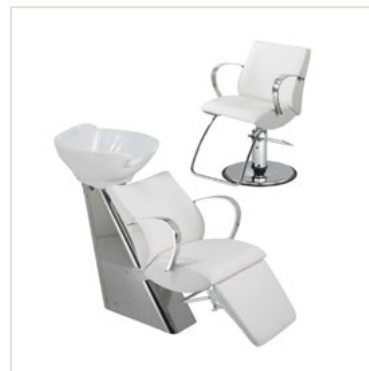
LUSO  
BW-U46 + SH-645



TESSORO  
BW-U56 + SH-645



OREGON  
SH-510



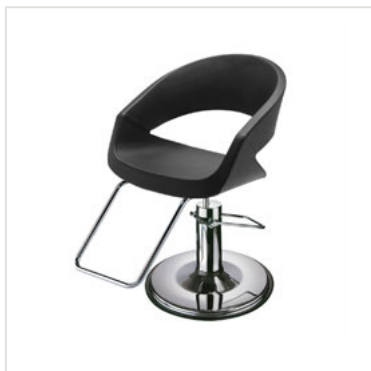
BAHAMA  
SH-506 / LIONESS ST-N30



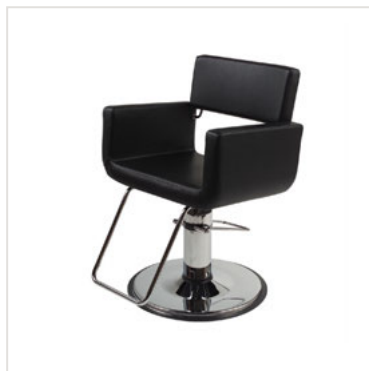


SALON SEATING

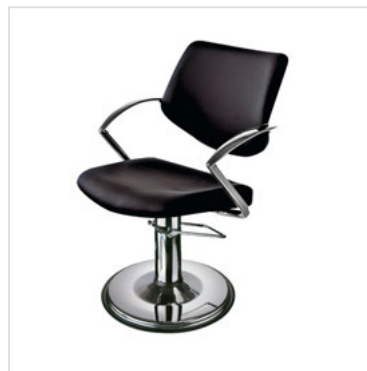
## MEDITERRANEAN INSPIRED



CARUSO  
ST-M80



BOSSA NOVA  
BMST-100

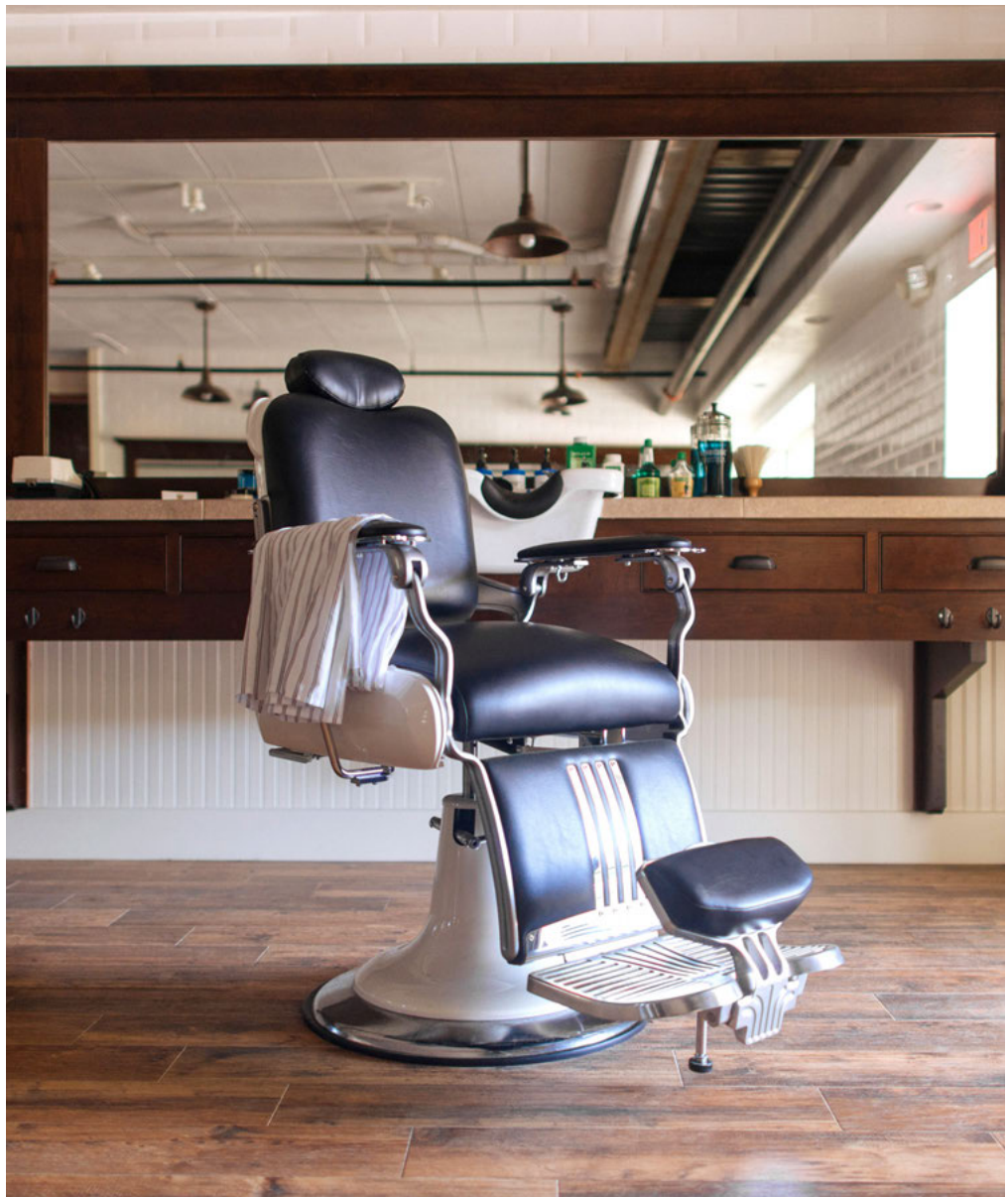


SARA  
ST-790



GHIA  
ST-022

BOMBSHELL SALON - ENCINITAS, CA

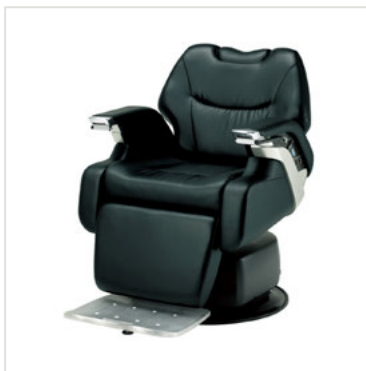




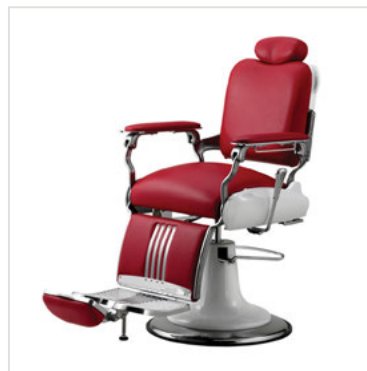


## MEN'S GROOMING

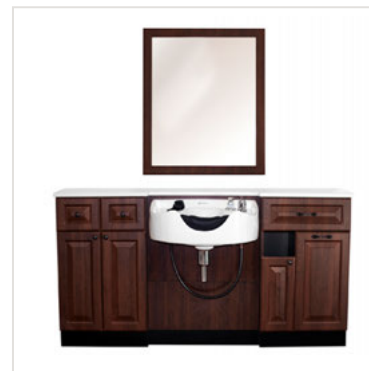
The Legend Barber Chair sets new standards for barber chair technology with its robust body style, sophisticated design, superior comfort, and emphasis on operator efficiency. From an enhanced vertical-lift pump and synchronous recline system to an ergonomically engineered seat and elegant upholstery piping, the barber chair is fine-tuned to take daily services to the next level.



LEGEND  
BB-LGFO



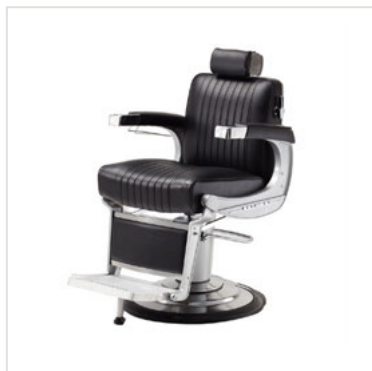
KOKEN LEGACY  
BB-0090



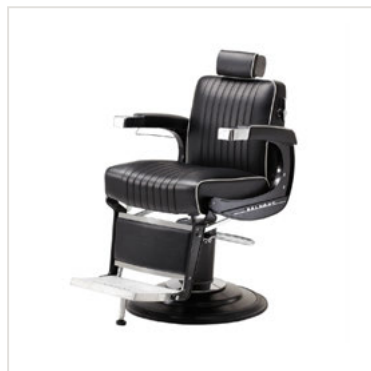
MAJOLICA CABINET\*  
MCC-1800RE



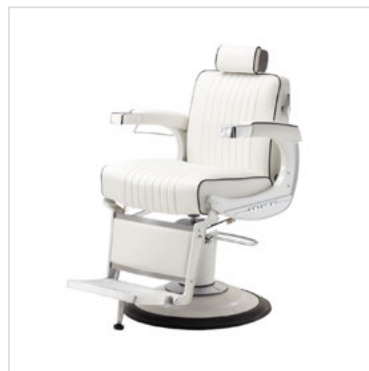
## MEN'S GROOMING



225 CLASSIC  
BB-225 HR



225 ELITE BLACK  
BB-225B HR



225 ELITE WHITE  
BB-225W HR



225 DIAMOND STITCH  
BB-225DMD HR

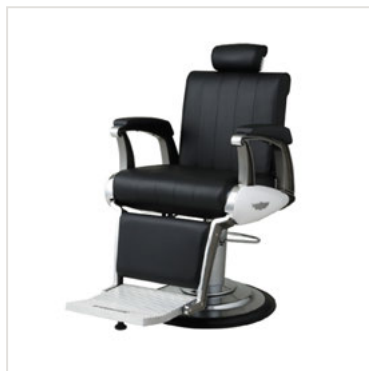




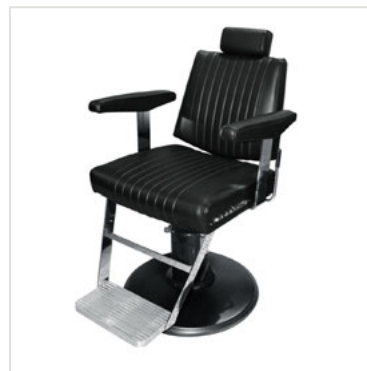
## MEN'S GROOMING



**HEELREST**  
Available for 225 and Clipper chairs



**CLIPPER**  
BB-CLPLB008S



**DAINTY**  
BB-405



**SPORTSMAN**  
BB-141

## FOOTREST OPTIONS



### 217 FOOTREST

Polished chrome finish, U-shaped style footrest with a straight linear design.



### 317 FOOTREST

Polished chrome finish, U-shaped style footrest with a slightly curved linear design.



### EURO STYLE

Polished chrome finish, T-shaped style, footrest platform with Raised Features.



### G90 FOOTREST

Polished aluminum finish, T-shaped style, dual-channel platform with the Takara logo features.



### KITA FOOTREST

Brushed aluminum finish, T-shaped style, brushed metal platform with raised features.



### KAZE STYLE

Floor step black molded rubber footrest

## BASE OPTIONS



### B1A BASE

Takara Belmont's standard and our best selling hydraulic base in bright chrome.



### FCS BASE

The FCS base looks slight but is a durable choice in beautiful bright chrome.



### B5C BASE

Heavy-duty B5C hydraulic base in brushed chrome.



### MSD BASE

Heavy-duty MSD hydraulic base in brushed chrome with a modern square flat base.



### FMB BASE

Clean-up is easy around the FMB floor-mounted hydraulic base, available in chrome.



### Y6C BASE

To complete the polished look of your designer chairs, choose the chrome Y6C or its shorter version, the Y6L.



### Y6L BASE

To complete the polished look of your designer chairs, choose the chrome Y6L or its taller version, the Y6C.



### MRD BASE

Heavy-duty MRD hydraulic base in brushed chrome with a modern rounded flat base.

## BARBER CHAIR BASES



### CLASSIC E BASE

Heavy-duty BS-BCE hydraulic base in brushed chrome. Available in white, silver or black.



### K25 BASE

Heavy-duty BS-K25 hydraulic base in brushed chrome. Available in white, silver, or black.

RECOMMENDED FOR STYLING CHAIRS ONLY.



### T7B

Legendary for its durability and range of height, the electric base T7B is available in black.





